



COPPER TRACK INDUSTRIES

M-76, MIDC, Ambad, Nashik 422010

Maharashtra (India)

E-mail:- coppertrack@rediffmail.com

info@coppertrack.co.in / sales@coppertrack.co.in

Website:- www.coppertrack.co.in

Contact:- 0253-2381244 / 07350591415 / 9225126972

Why Us

- Wide Array Of Products
- Timely Delivery
- Repeated Trade Orders From Our Client
- Reasonable Prices
- Best Quality Material
- Response Time Is Very Minimum
- Fast Track Delivery Scheme For Urgent Order

PROCESS CAPABILITIES

- Laminates - FR-1, FR-2, CEM-3, FR-4 & Aluminium Clad
- Thickness-0.8mm, 1.0mm, 1.2mm, 1.6mm, 2.4mm, 3.2mm
- Single Sided PCB, Double Sided PCB,
- Double Sided PTH, Aluminium PCB
- Solder Mask- Any Colour
- Highest Quality With On Time Delivery

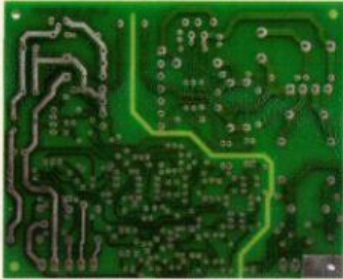
OUR SISTER CONCERN, ENERMAX SYSTEMS, MANUFACTURERS OF

- Battery Chargers
- Battery Charger Of Agricultural Pumps
- E-bike Battery Charger
- AC-DC Adapter For RO Water Purifier
- Solar Charge Controllers
- SMPS
- Solar Street Lights
- Solar Pump Systems
- Solar Home Light System
- LED Aviation Lamp
- LED Drivers
- UPS / Inverter
- Mini UPS
- LED Lights

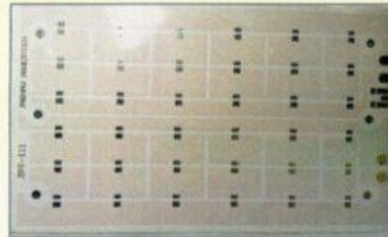


COPPER TRACK INDUSTRIES

Single Sided PCB (Solder Side)



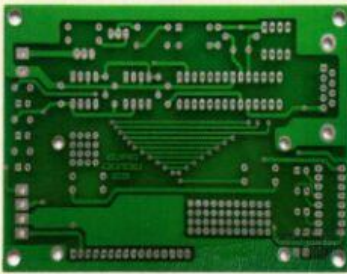
Aluminium PCB



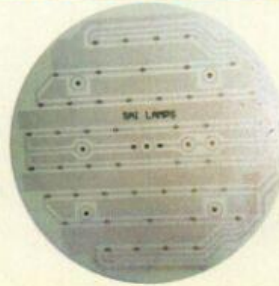
Single Sided PCB (Component Side)



Double Sided PTH PCB (Solder Side)



Metal Core PCB



Double Sided PTH PCB (Component Side)



Training Courses / Workshop For Diploma and Engineering Students



COPPER TRACK INDUSTRIES

M-76, MIDC, Ambad, Nashik 422010
Maharashtra (India)

E-mail:- coppertrack@rediffmail.com

info@coppertrack.co.in / sales@coppertrack.co.in

Website:- www.coppertrack.co.in

Contact:- 0253-2381244 / 07350591415 / 9225126972

Contact us:-